

Salt and Sludge Batch Preparation Overview

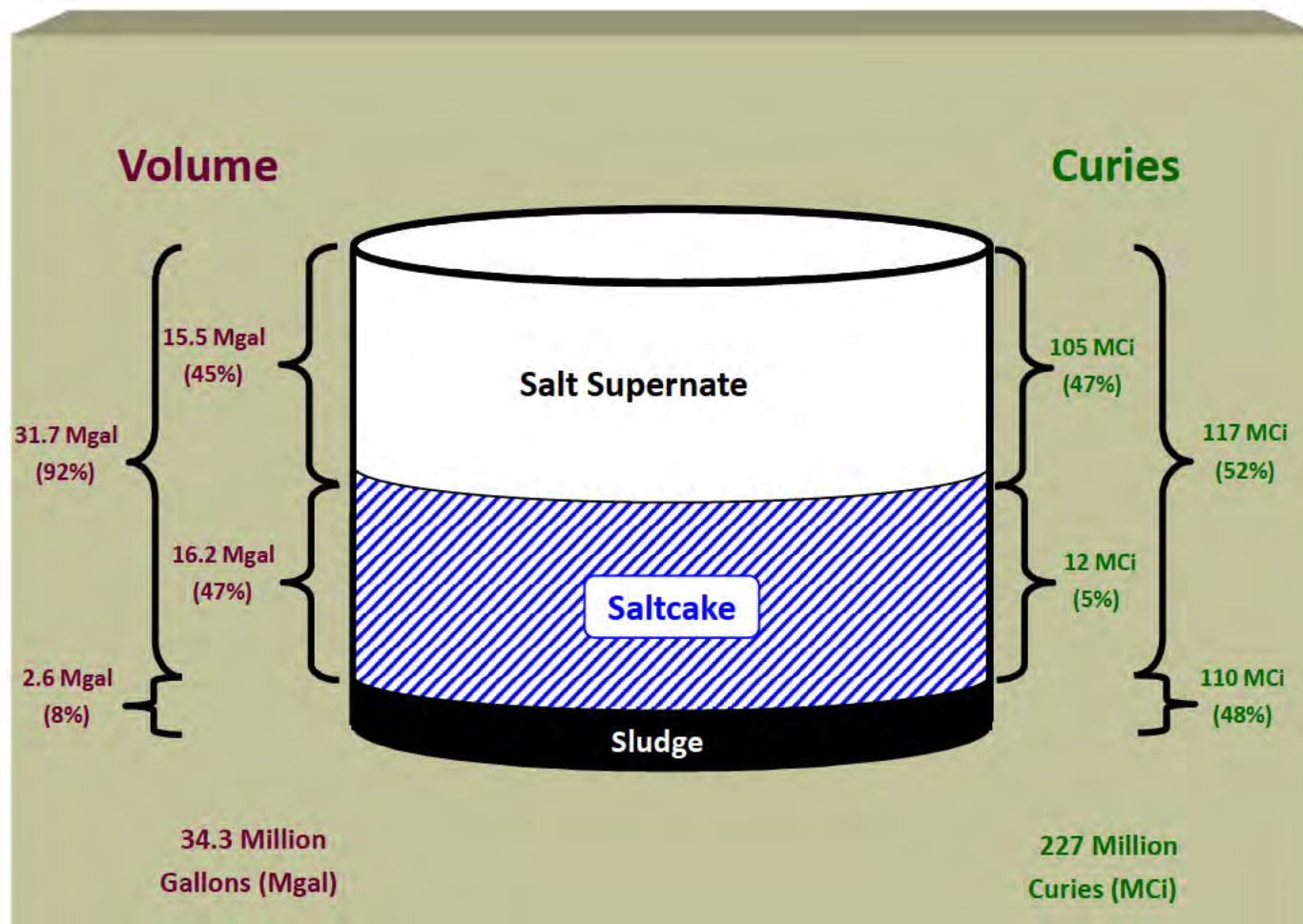
Ken Wells
Tank Farms / ETP Director

March 22, 2022

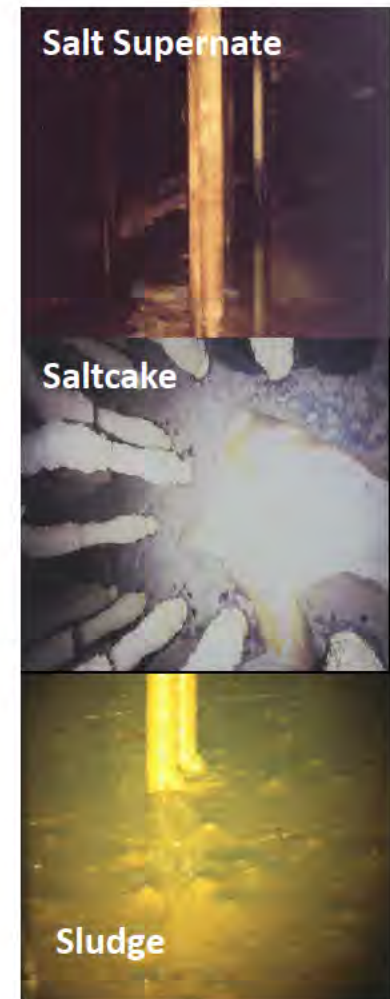
SRMC-TFO-2022-00001



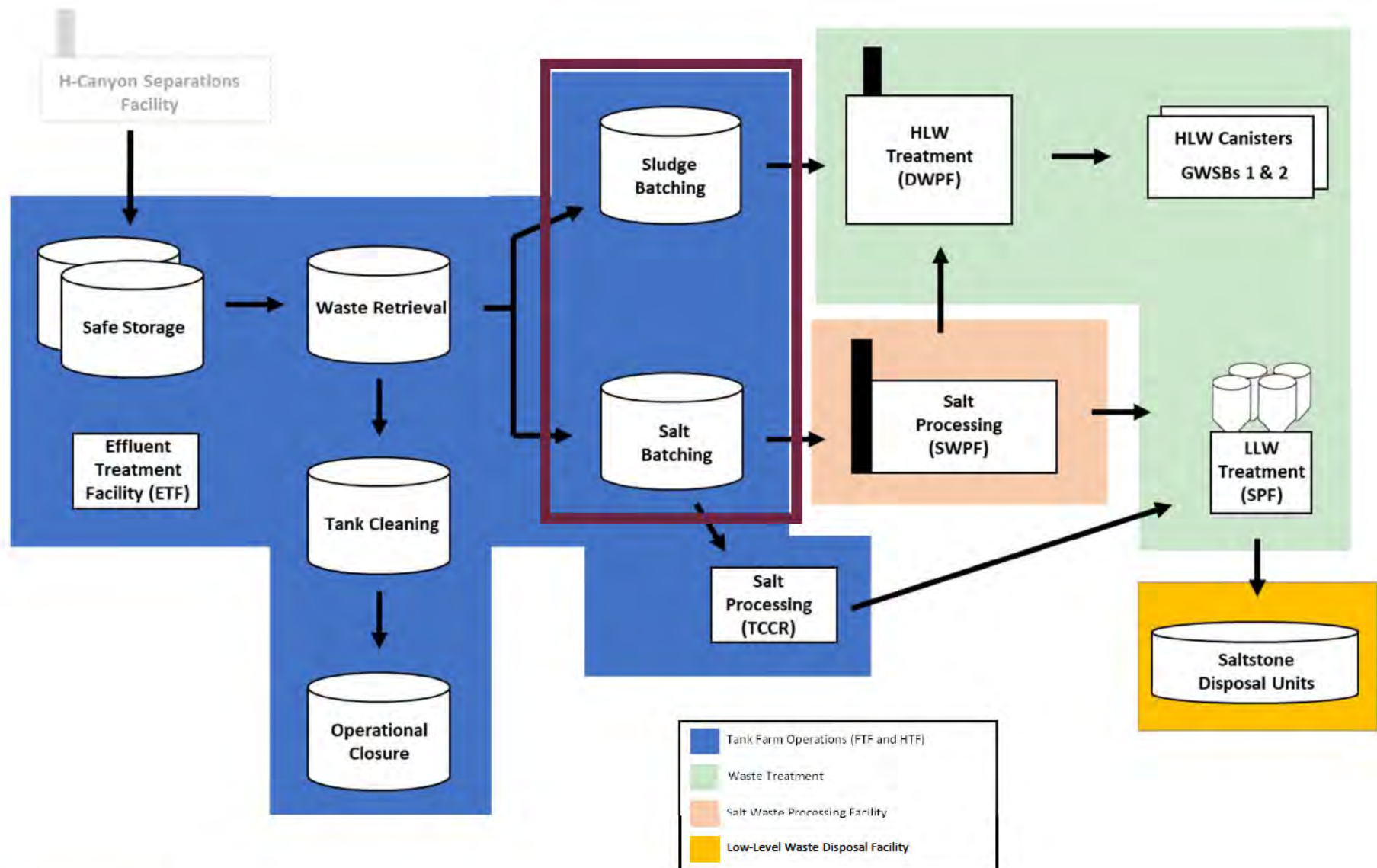
SRS Tank Waste Inventory



Inventory values as of 2021-12-31



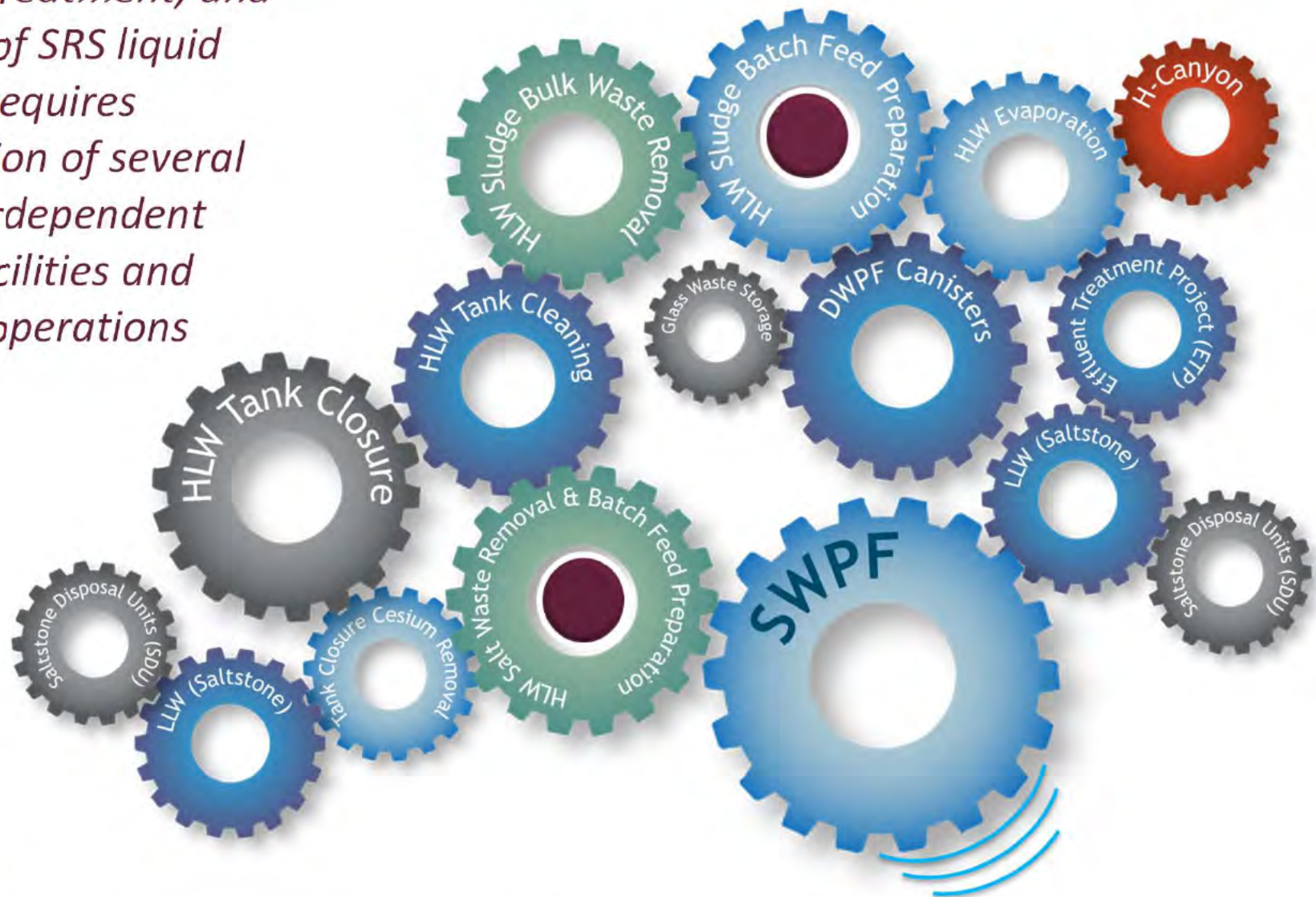
SRS Liquid Waste Process Flow



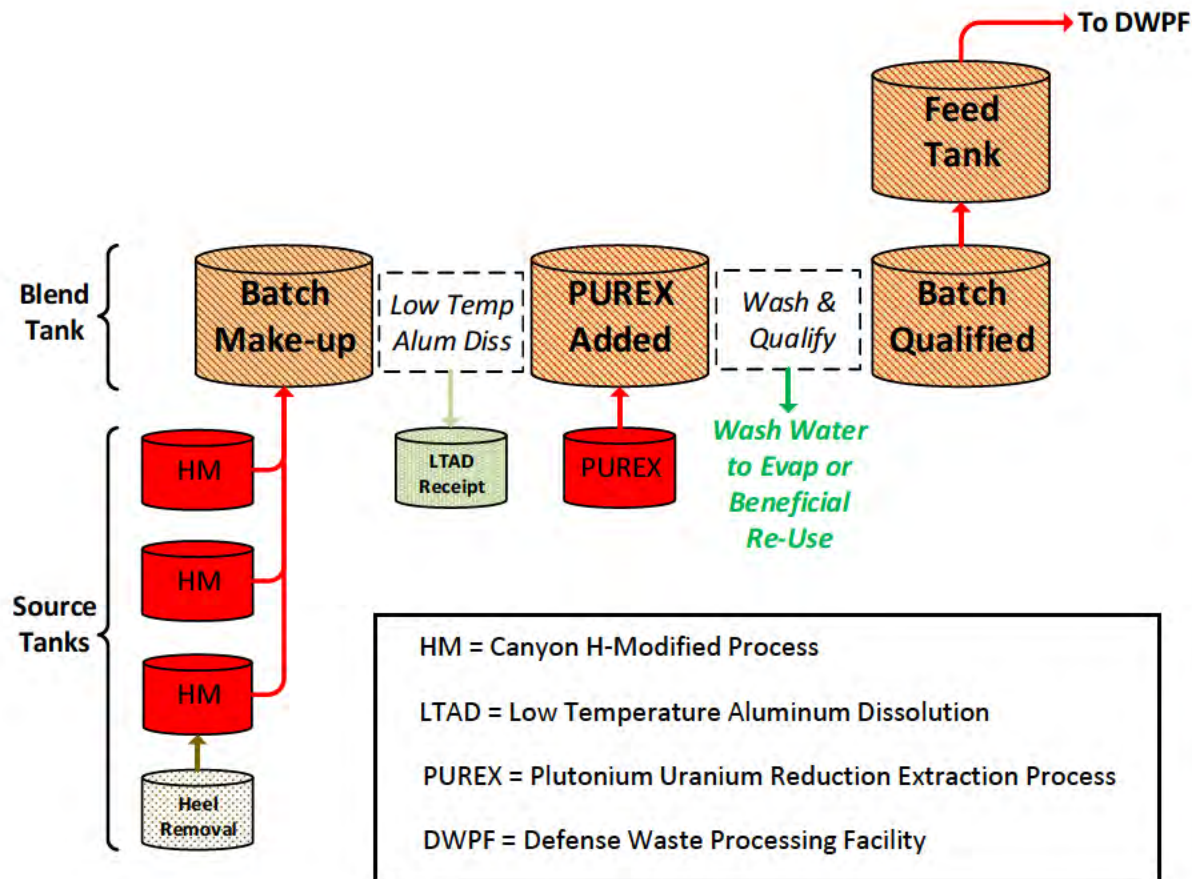
SRS Liquid Waste Integration



Safe storage, treatment, and disposition of SRS liquid waste requires synchronization of several highly interdependent nuclear facilities and chemical operations

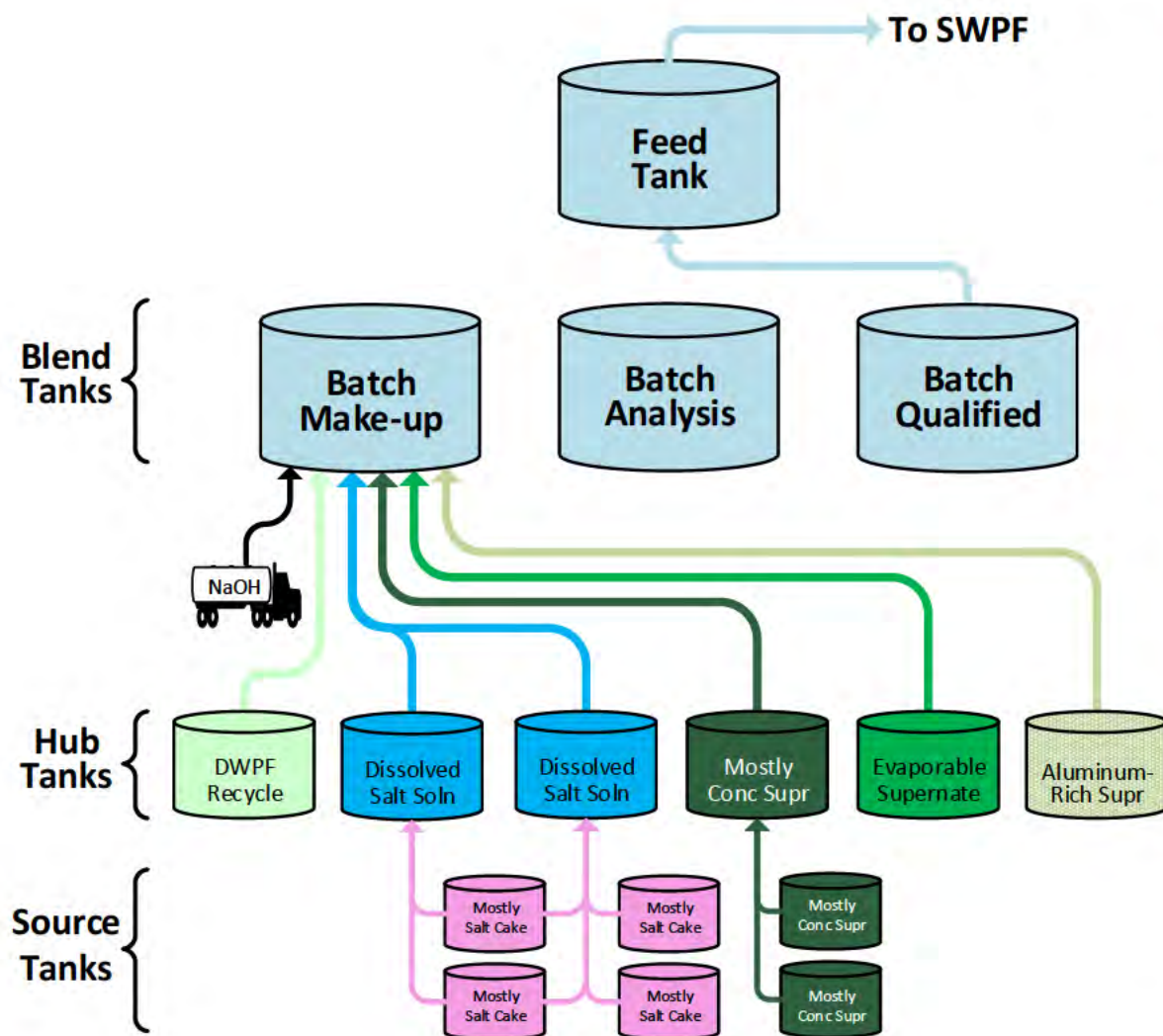


HLW Sludge Batch Feed Preparation



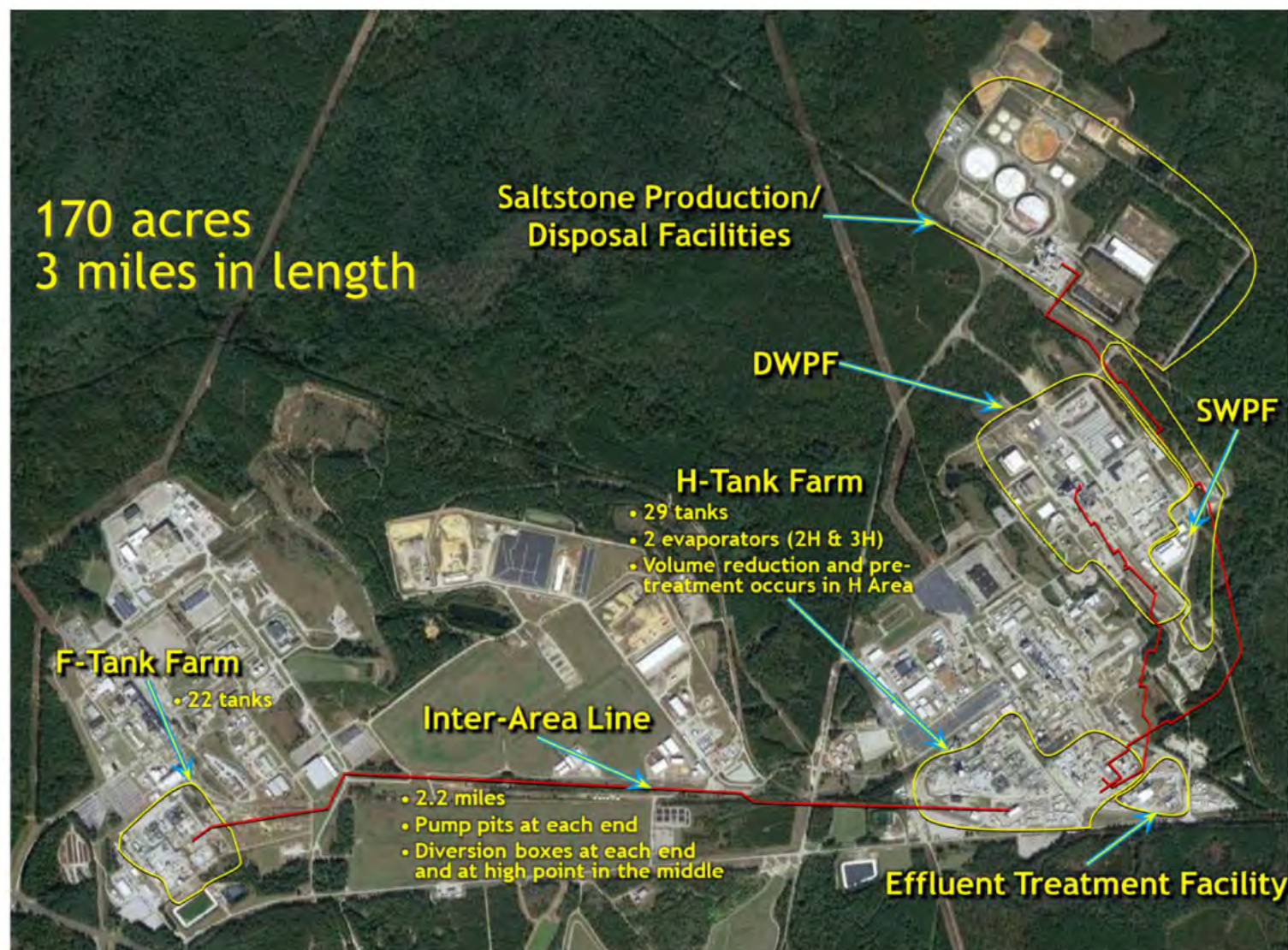
- Batch recipes are based on accessible sludge heels
- Formulated to meet nuclear safety & production requirements
- Sludge is washed to remove excess salt solution
- Wash water can be evaporated or used in Salt Batch Preparation
- Sludge washing and DWPF recycle returns create 1.3 gallons of salt waste for every 1 gallon of sludge
- Maximizes HLW canister waste loading

HLW Salt Batch Feed Preparation



- Batch recipes are based on a blend of salt sources
- Formulated to meet nuclear safety & production requirements
- Salt retrieval, preparation and batching increase waste volume by 3X
- Blend Tanks can be in the Make-up, Analysis, or Qualified stage independently
- Proven ability to compile a million-gallon SWPF batch in less than 90 Days
- Delivers over 92% of the tank waste material for SWPF batches and for TCCR dissolved salt solution processing

Liquid Waste System Footprint



Questions

